

BCIT Scholarly Activity Week

Fostering Collaboration Between Nursing Faculty and Clinical Research Teams

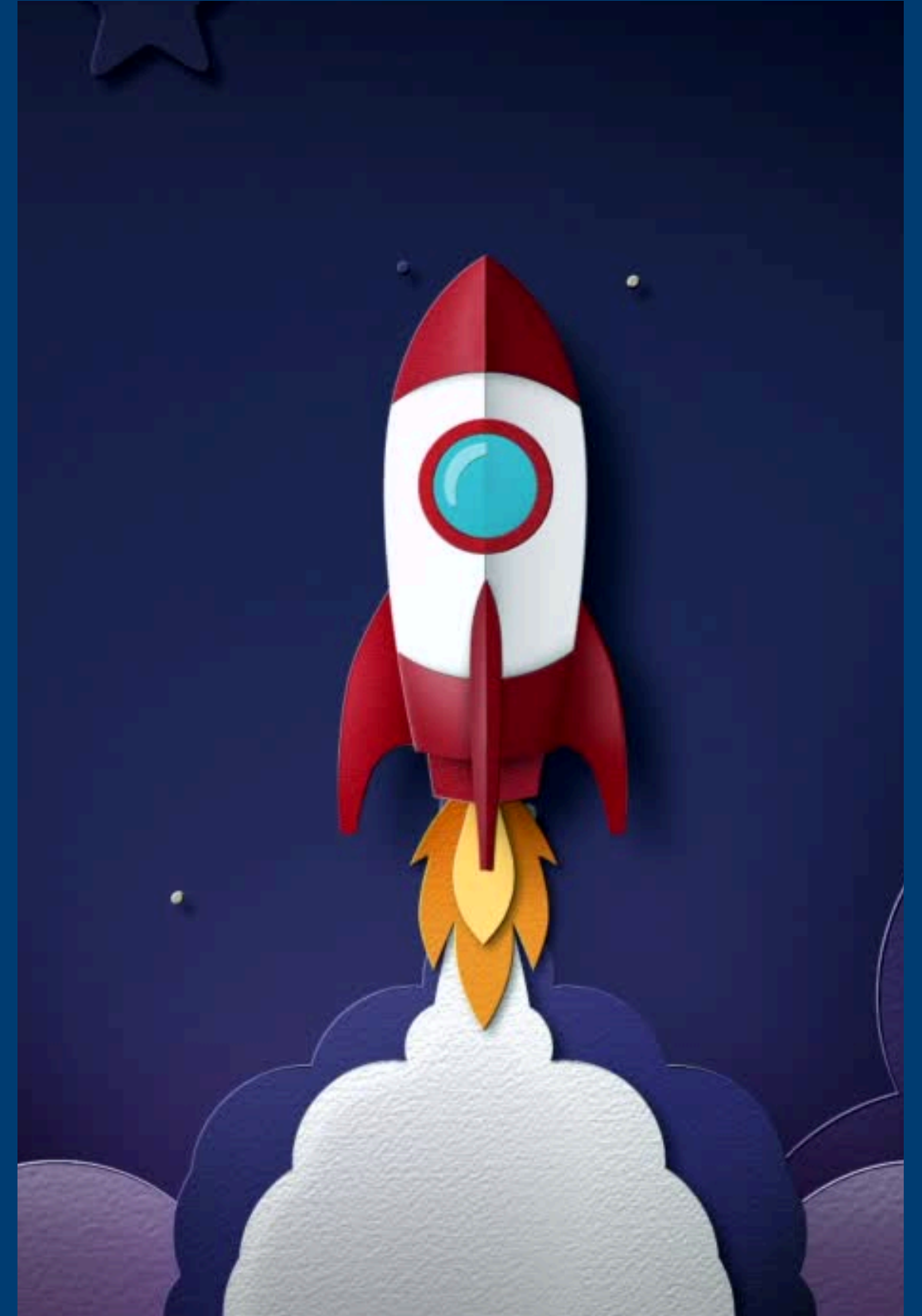
Examining Licensed Practical Nurse Integration in Emergency Departments



Emily Tang Virtual Simulation Lead / Faculty, Specialty Nursing Emergency, SoHS
Harroop Sharda Faculty, BSN Scholarship Capacity Lead, SoHS

Background

- Program Review of Scholarship in 2019
- Creation of the Scholarship Lead Role
- Building Scholarship into the BSN 2023–2027 Strategic Plan
- Accreditation as a driver
- Strong industry partnership with Providence Health Care (PHC)



The PHC Research Challenge

Launched in 2011, the PHC Practice-Based Research Challenge aimed to:

- Improve patient care
- Engage point-of-care staff in research, quality improvement, evaluation & evidence-based practice
- Create excitement in workplace around research
- Build bridges between practice and academia



Practice-Based Research

What Is It?

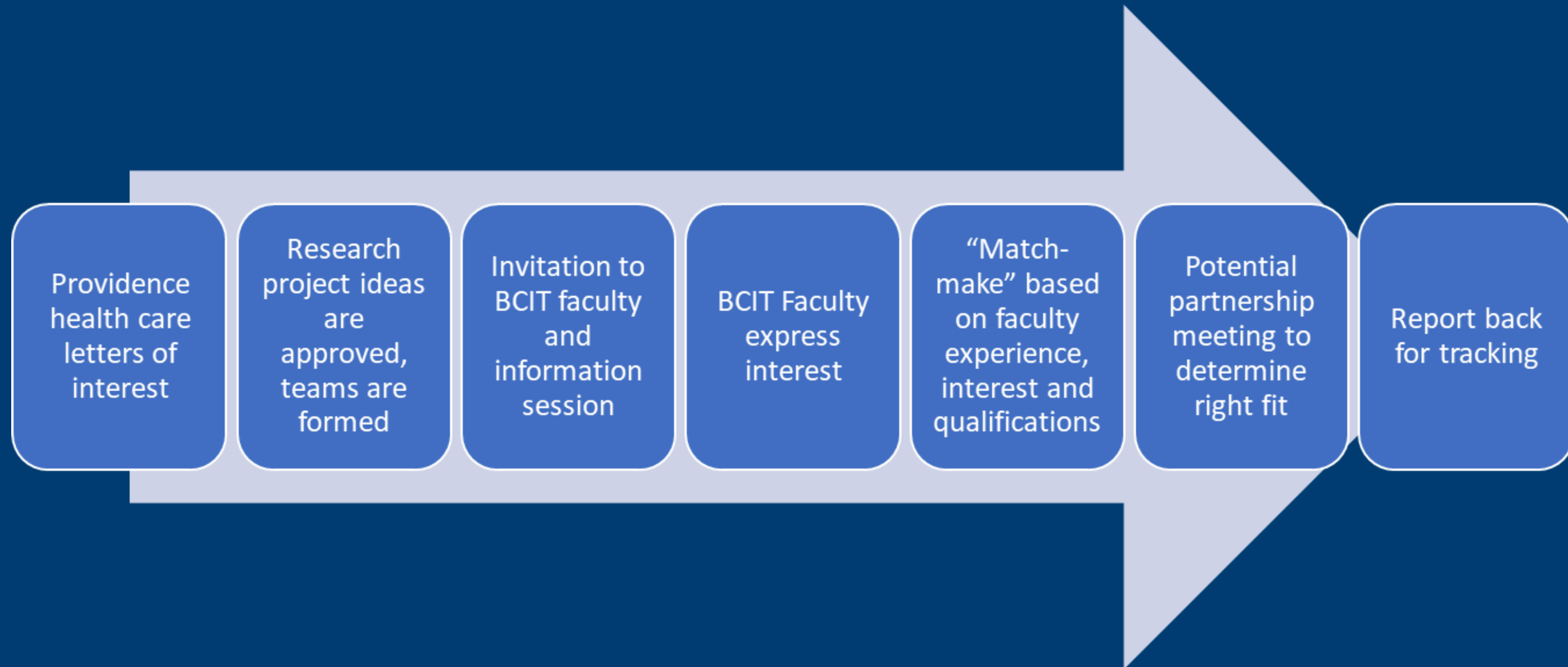
- Beginners are welcome!
- Research done by and with clinicians
- Addresses questions relevant to care
- Findings are integrated more smoothly into practice
- Teams are mentored by experienced researchers

Benefits

- Advances clinical practice
- Leads to patient care improvements
- Keeps clinical practice updated
- Voices and perspectives of direct care clinicians improve research



BCIT-PHC RC Collaboration Process



The BCIT & PHC Team



Manu Gill
Principal
Investigator, PHC
Professional
Practice Office



Chandell Kelly
Co-Investigator,
PHC Clinical Nurse
Educator (MSJ)



Emily Tang
Co-Investigator,
BCIT Emergency
Specialty Nursing /
Simulation Faculty



Harroop Sharda
Co-Investigator &
Research Mentor,
BCIT BSN
Scholarship Lead



Chris Rauscher
PHC Patient
Partner

Background & Relevance

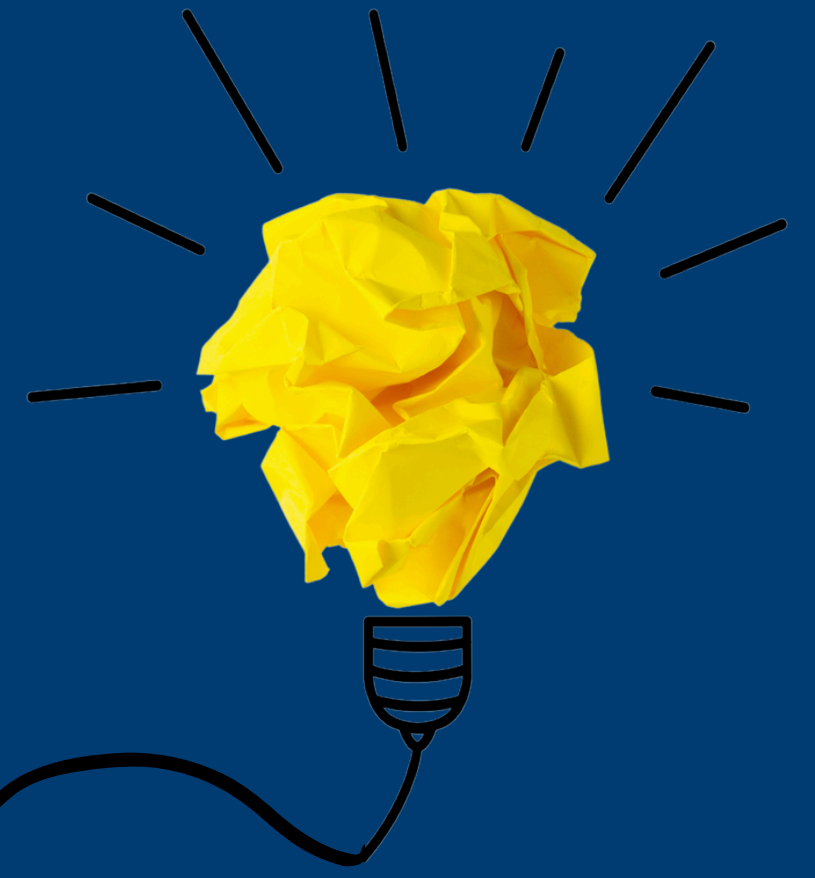
The Landscape

- Canada faces a significant nursing shortage - **projected deficit of 117,600 nurses** by 2030
- Pre-pandemic, **60% of nurses considered leaving** their jobs within a year; **some contemplated leaving the profession**

(Canadian Federation of Nurses Unions, 2022; Ellwood & Murphy, 2023; McGillis, 2020)

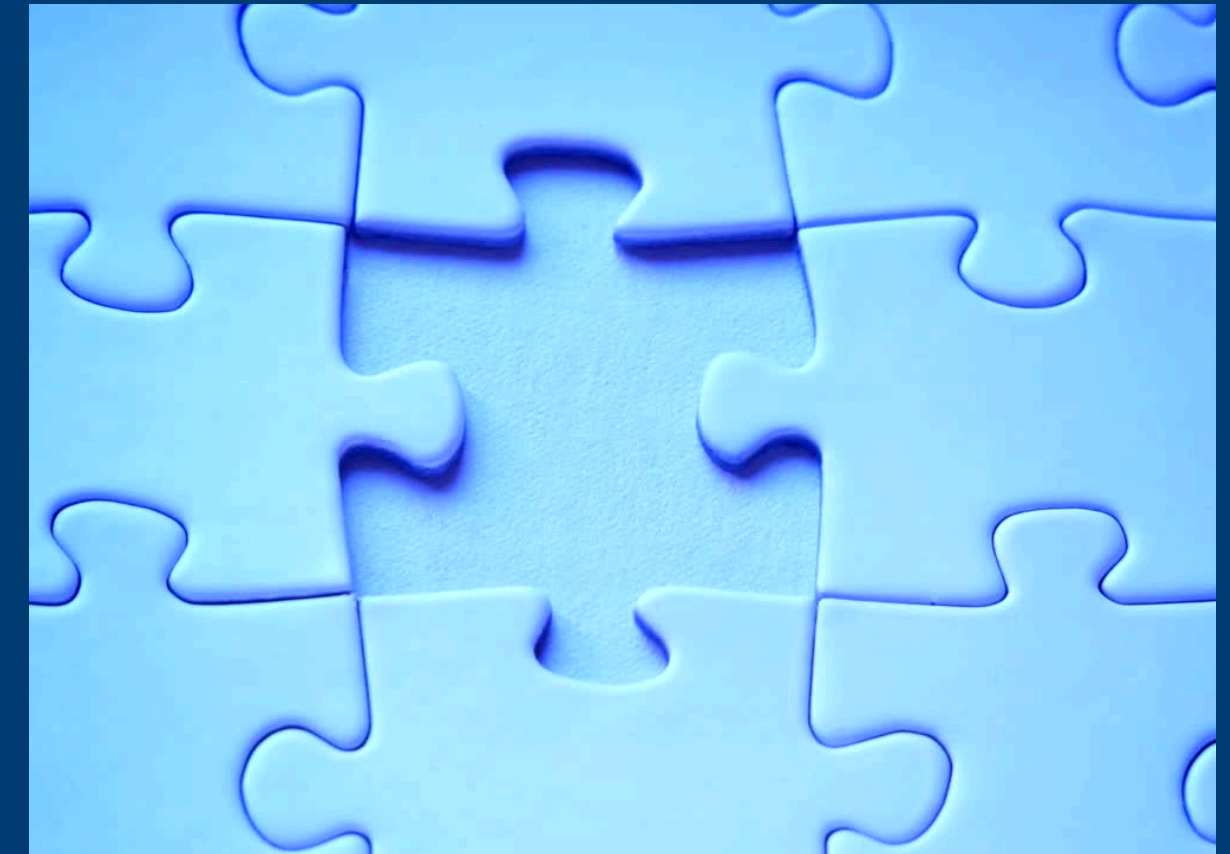


- Nursing models evolved over time; need to **reassess care models** to address health human resource shortage while providing quality care
- PHC recently **integrated hybrid care model** with LPNs and RNs.



Objectives & Goals of Research

- An opportunity for **academic-clinical partnership** through research collaboration.
- Reciprocal approach **research skills capacity development** through applied research
- Specific goals of the exploratory study: **identifying facilitators and barriers to LPN integration in high-acuity settings.**



Research Question: What is the impact of LPN integration in the ED on perceptions of team function, leadership, role clarity, support, and communication; and, its overall impact on staff satisfaction?

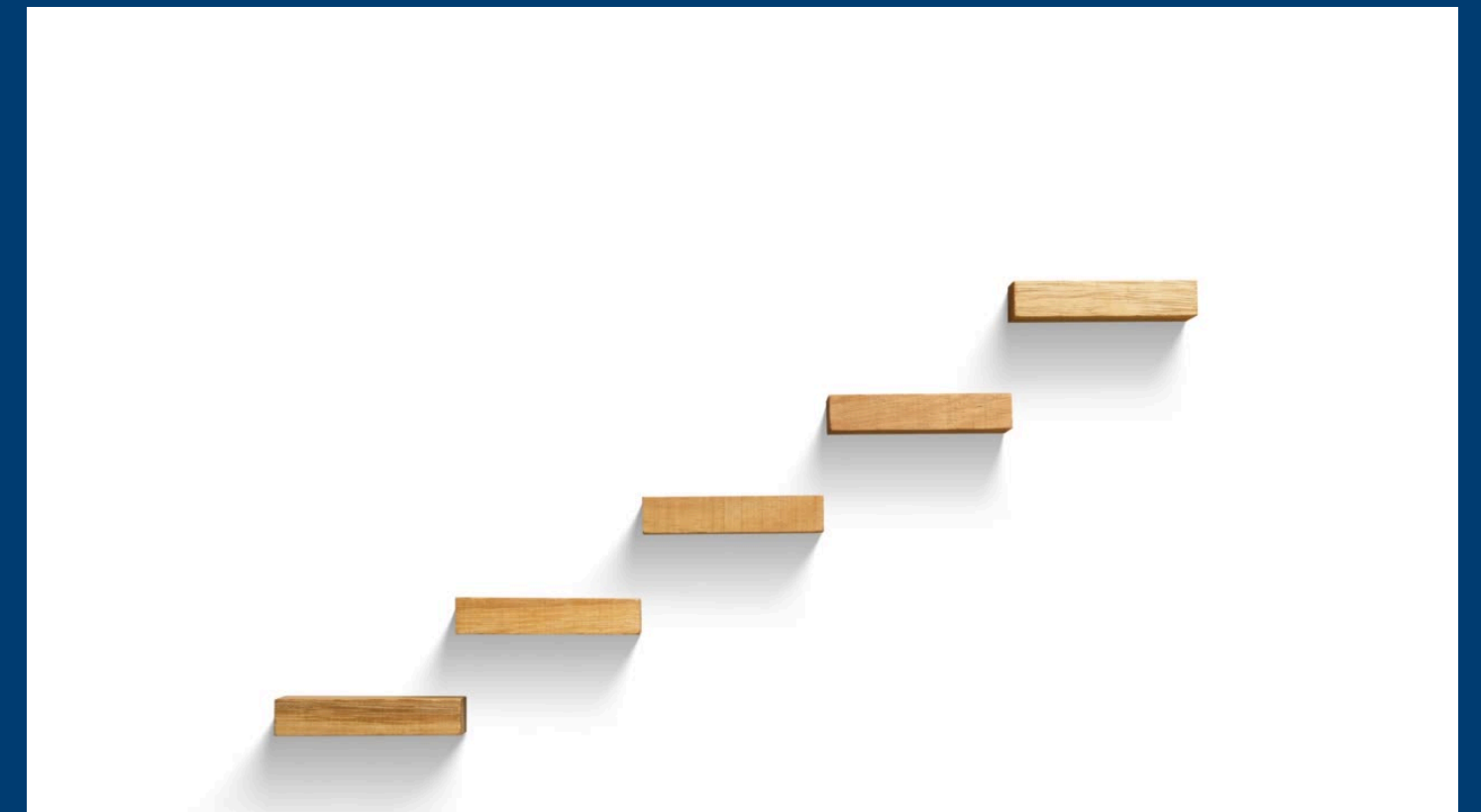
Methods

- Mixed research design, exploratory.
- Data collection and analysis: TeamSTEPPS Teamwork Perceptions questionnaire with adaptations for qualitative data collection distributed to with LPNs, RNs and other non-nursing ED staff
- Sampling design: various ED staff groups



Currently... & Next Steps

- Ethics application has been submitted
- **Surveys will be distributed in January.** Use of TeamSTEPPS model to guide data collection
- Gaps identified through survey generated **data will guide the next phase of the study** which will be designed with a qualitative focus using focus groups and interviews
- Abstract accepted for **Health Quality BC Conference, International Council of Nurses (ICN) Conference**



Thank You!

